

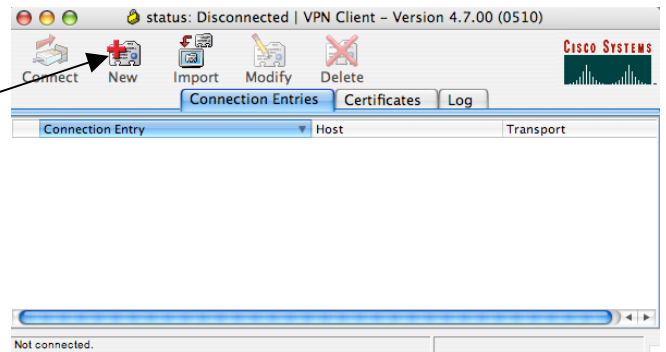
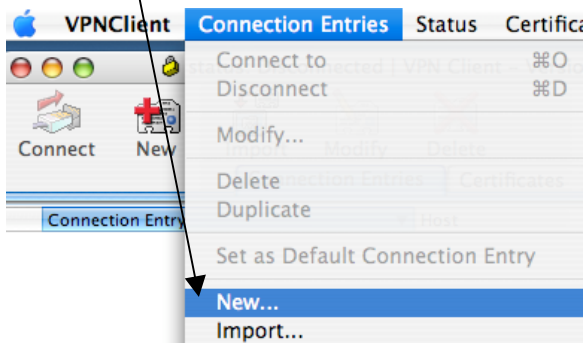
Setting Up Your VPN Client

NOTE: What's a Virtual Private Network? Learn more...
http://en.wikipedia.org/wiki/Virtual_Private_Network



1. Open the VPN Client program.

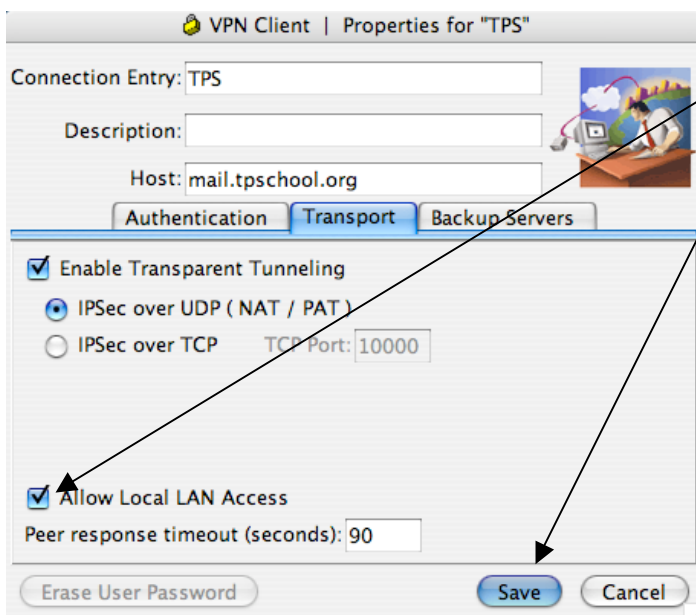
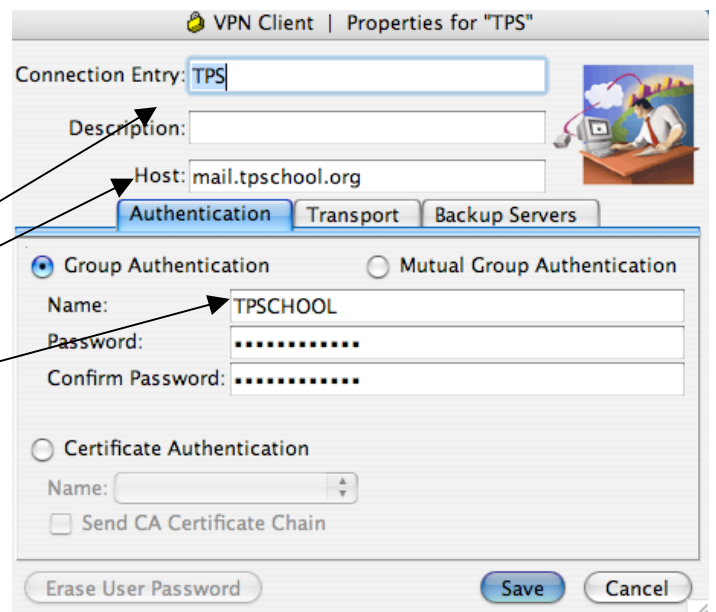
2. Click on "New" in the status window or choose "New" from the "Connection Entries" menu.



3. In the Connection Entry field, type "TPS".
In the Host field, type "mail.tpschool.org".

Under the Authentication tab, in the Name field, type "TPSCHOOL". The name is case sensitive.

Type the VPN password twice. This password is unique and must be given by the Tech Director.



4. Under the Transport tab, click the "Allow Local LAN Access" check box.

5. Click the Save button.